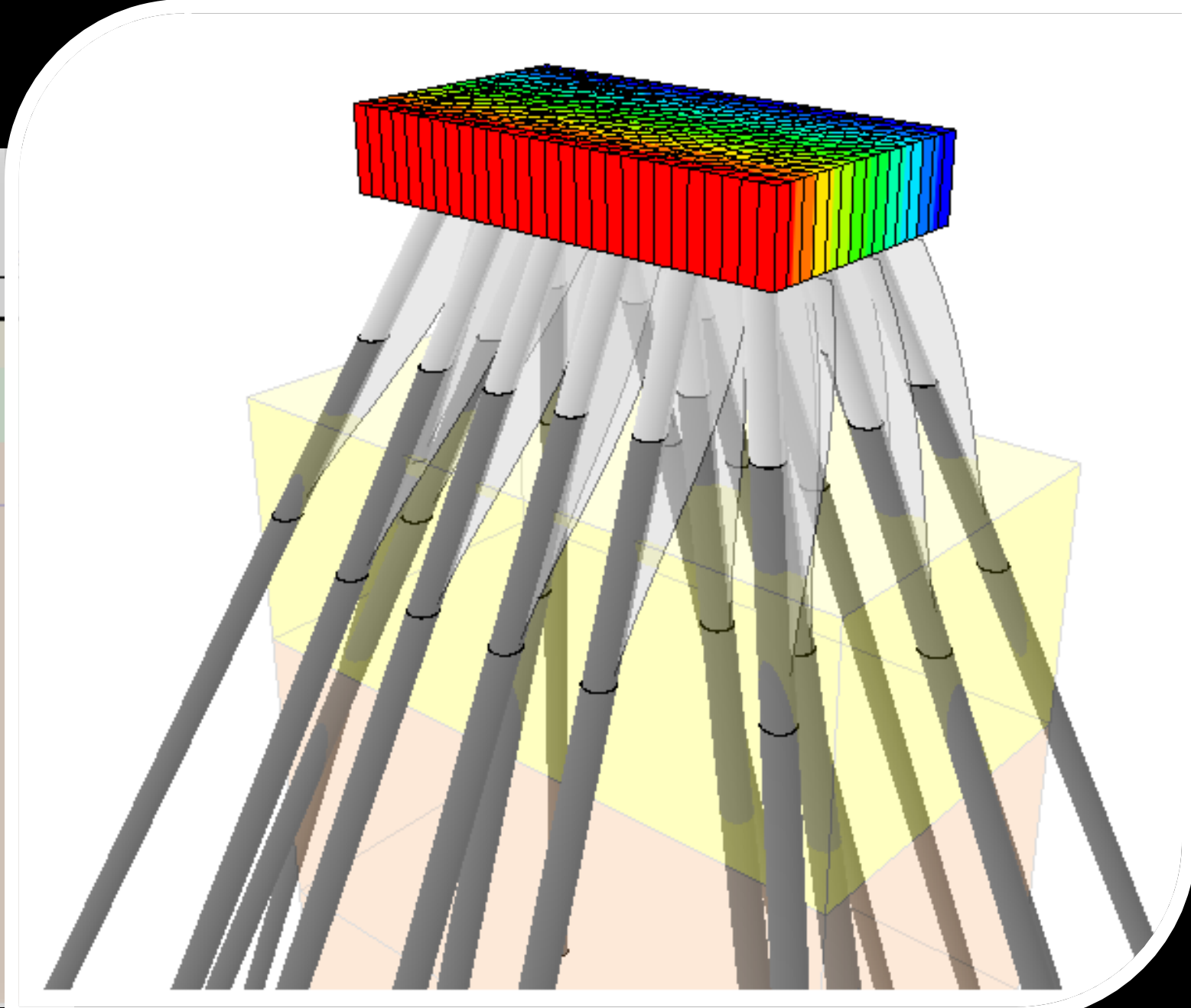
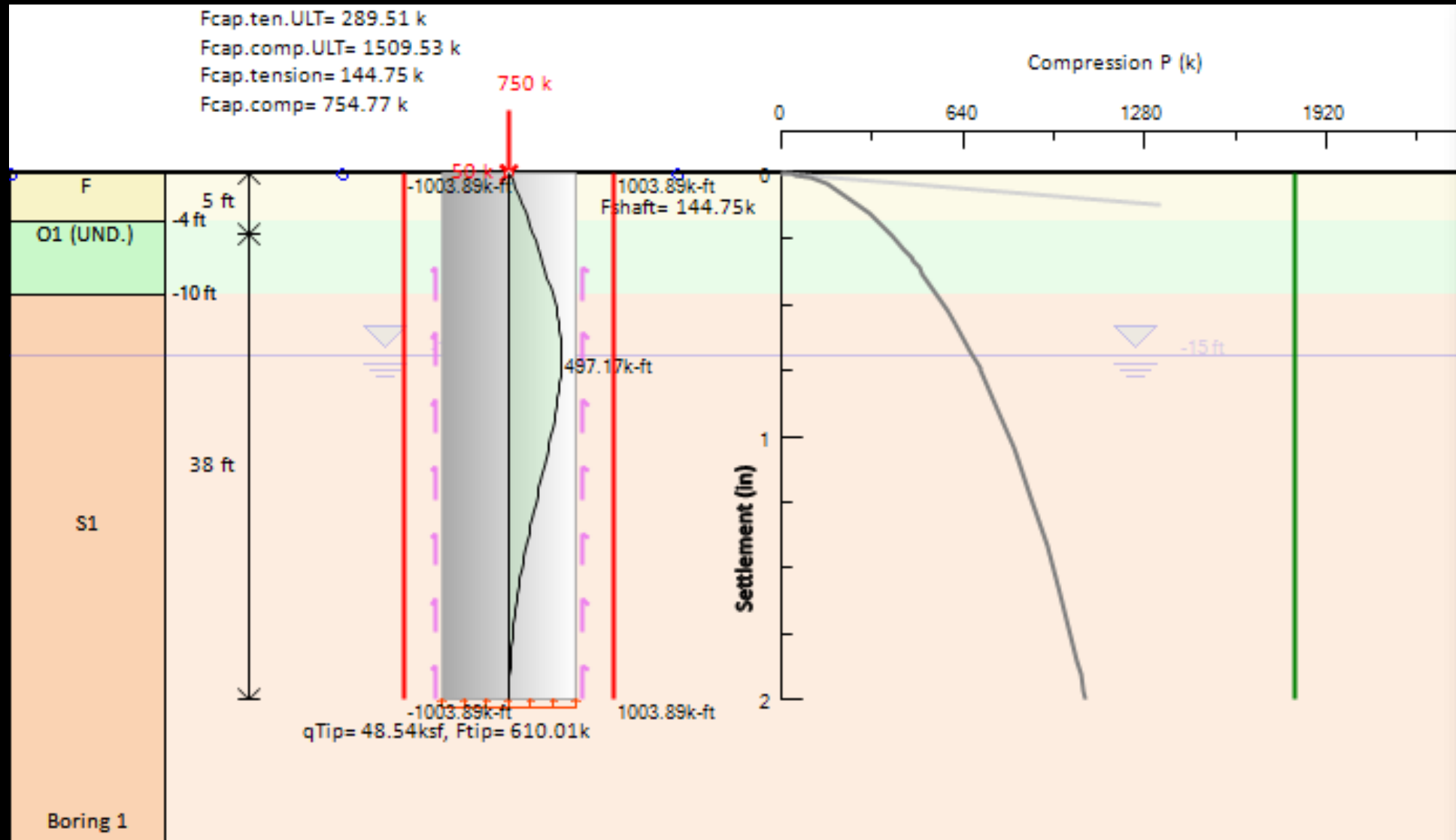


Design of Deep Foundations - Methods and Software Application

Presentation: Dimitrios Mamoglou, Senior Engineer, Deep Excavation LLC
 mamoglou@deepexcavation.com - T: +1-206-279-3300



Deep Excavation LLC
240 W 35th Street, Suite 1004
New York, NY, 10001
USA

Websites:
www.deepexcavation.com
www.deepex.com

Contact Information:
sales@deepexcavation.com
training@deepexcavation.com

- Software solutions for excavation and foundation professionals
- Consulting Services - Design of deep excavations and pile foundations
- Virtual Reality applications for geotechnical engineers and contractors



DeepEX



HoloDeepEX



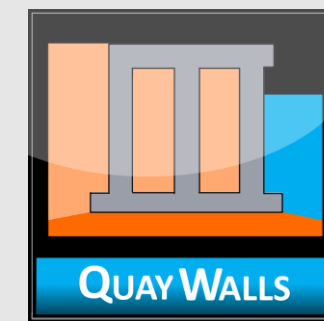
DeepFND



HelixPile



SnailPlus



QuayWalls



SiteMaster

PART 1: DeepFND/HelixPile Software Features and Analysis Methods

More information:

**Click here to learn more:
DeepFND - Features and Capabilities**

**Click here to learn more:
HelixPile - Features and Capabilities**



Lateral and Vertical Analysis and Structural Design of all common pile types

Single Piles and Pile Groups

Non-Helical Piles

Installation Methods:

- ✓ Drilled Piles
- ✓ Driven Piles
- ✓ Caissons
- ✓ Micropiles
- ✓ CFA Piles
- ✓ Drilled-In-Displacement Piles

Pile Types:

- ✓ Concrete Sections: Rectangular, Circular, Circular Hollow, Octagon
 - ✓ Steel Sections (H-Beams, Pipes, Channels)
- ✓ Timber Piles (Wood)
- ✓ Belled Bottom
- ✓ Composite Section Along the Pile

Soil Springs & 3D Finite Element Analysis Methods

Single Piles and Pile Groups

Helical Piles

Pile Types - Helix Configuration - Casing:

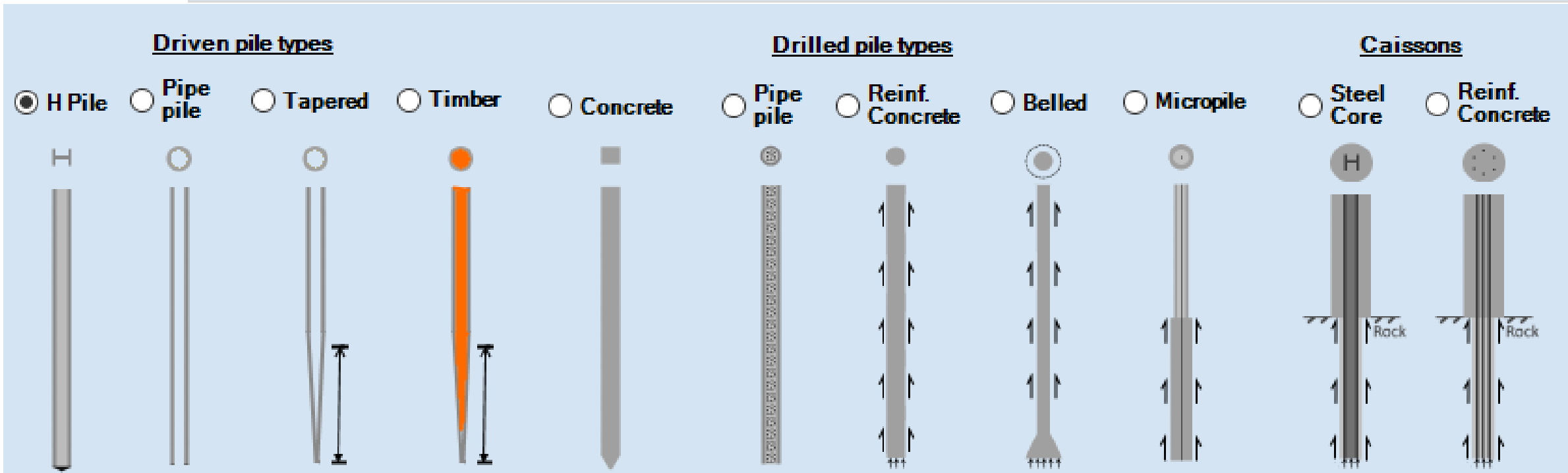
- ✓ Pipes
- ✓ Square Solid
- ✓ Square Hollow
- ✓ Include Several Helix Configurations on each Pile
- ✓ Use of External Casing
- ✓ Option to have Grouted Piles

Helical Piles also Analyzed with:



HelixPile: Helical Piles Design Software

Common pile types



Pile Sections:

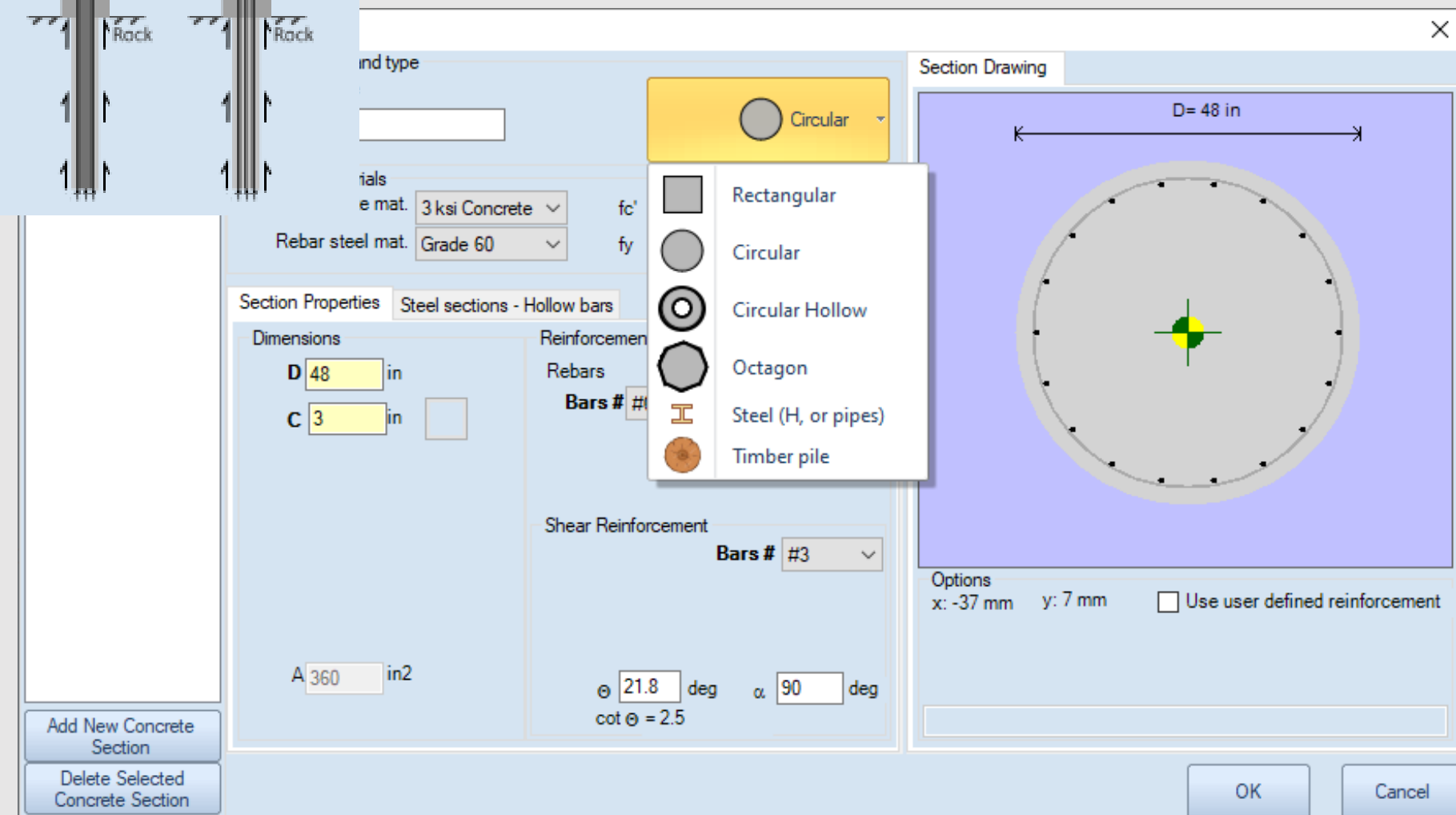
- Concrete Piles (Rectangular, Circular, Octagon)
- Circular Hollow Sections
- Composite Sections
- Steel Beams (Pipes, H beams, channel sections)
- Timber Piles (wood)
- Belled Bottom Piles

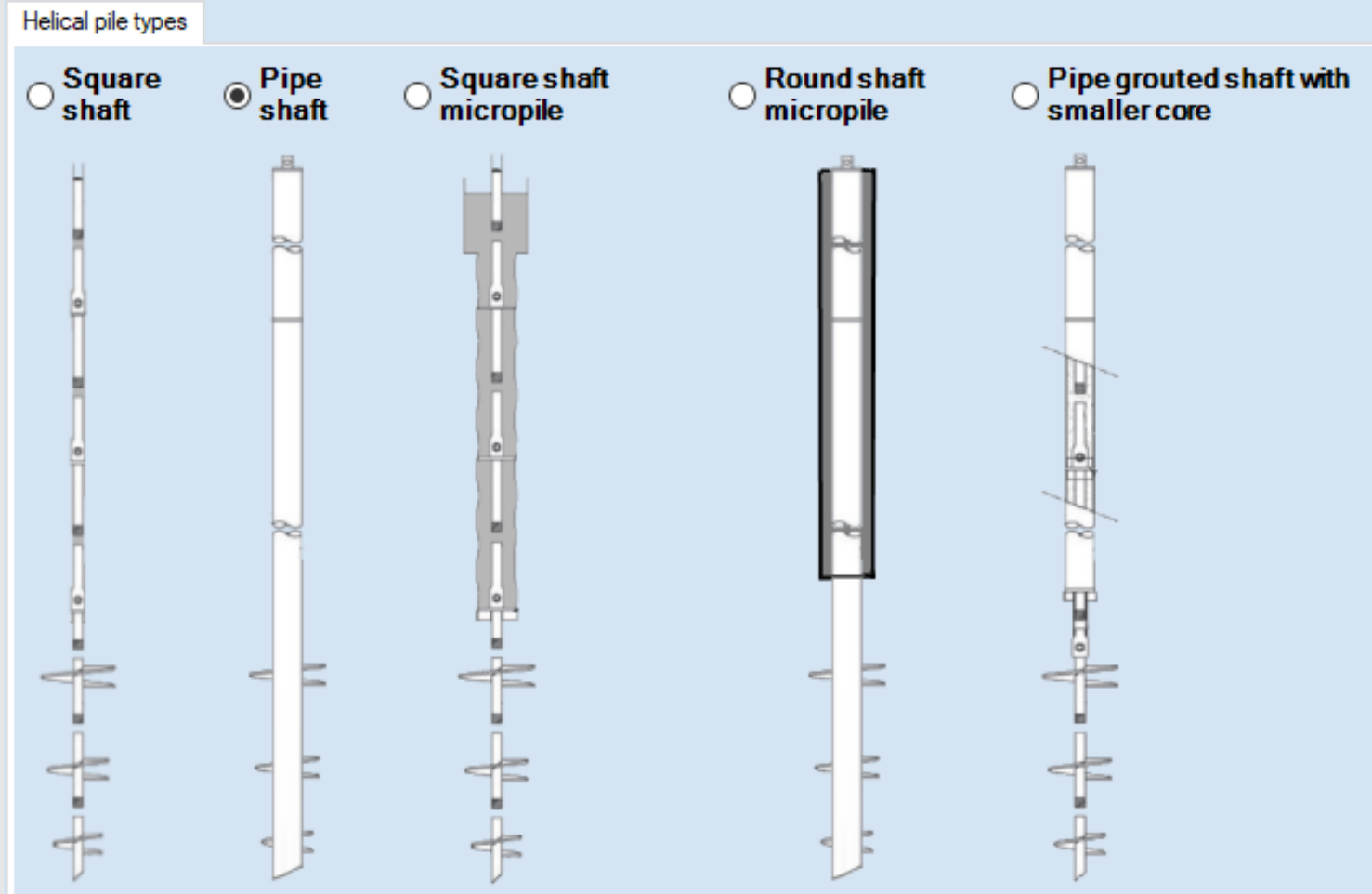
Installation Methods:

- Drilled Piles
- Driven Piles
- Caissons
- Continuous Flight Auger Piles (CFA)
- Drilled-In-Displacement Piles

Implemented Methods:

- FHWA GEC 8 and GEC 10
- AASHTO LRFD Norlund





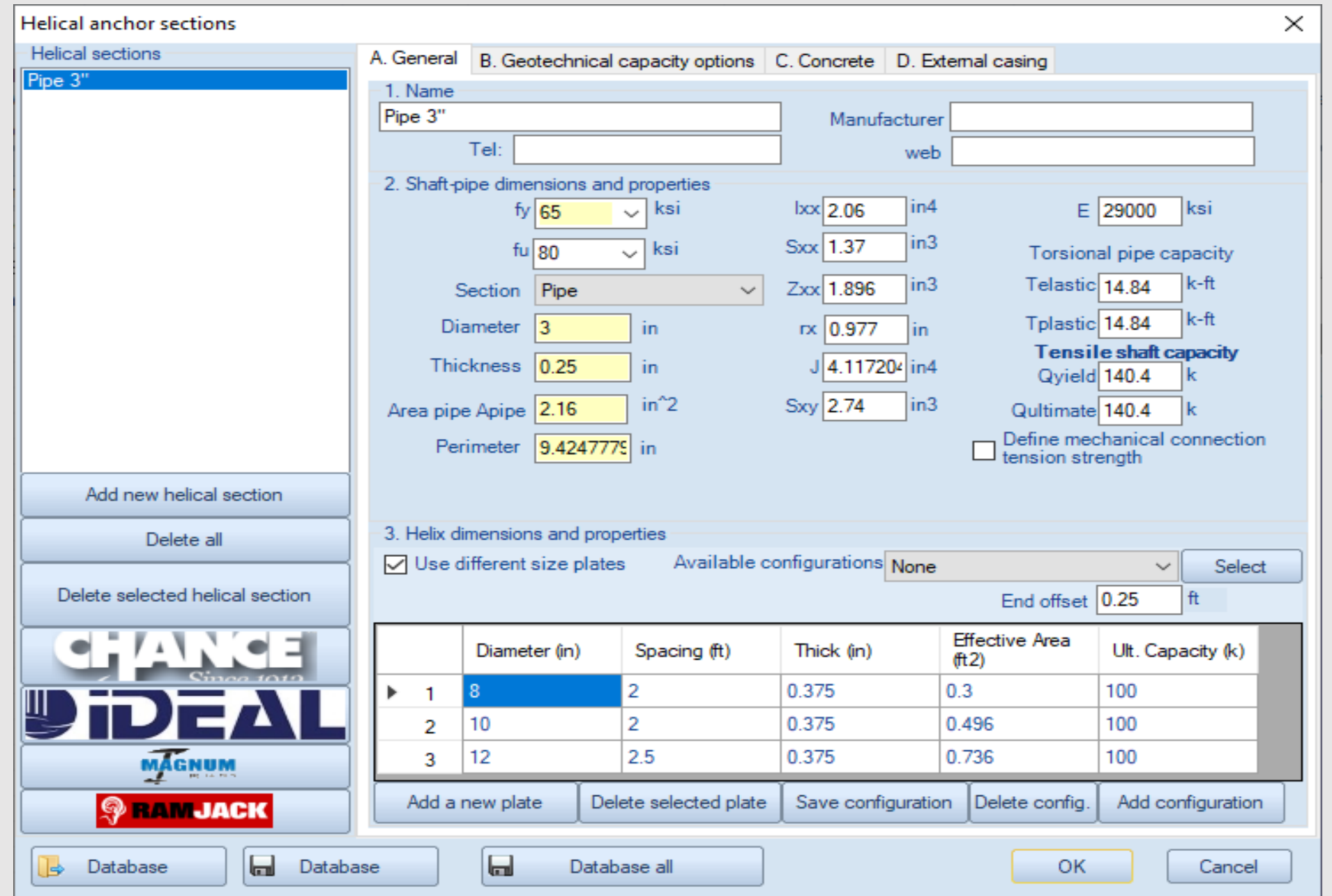
- ✓ Create and save to database multiple helical pile sections
- ✓ Each helical pile section can have multiple helix configurations
- ✓ Bearing capacity calculations, lateral pile analysis, installation torque estimation

Available Helical Pile Types:

- Circular Hollow Piles
- Square Solid Piles
- Square Hollow Piles

Bearing Capacity Methods for Helical Piles:

- Cylinder Method
- Individual Plate Method



Helical anchor sections

Helical sections

- Pipe 3"

Buttons: Add new helical section, Delete all, Delete selected helical section

Logos: CHANCE, IDEAL, MAGNUM, RAM-JACK

Database buttons: Database, Database, Database all, OK, Cancel

Configuration Panel (Pipe 3")

A. General

1. Name: Pipe 3" Manufacturer: _____ Tel: _____ web: _____

2. Shaft-pipe dimensions and properties

fy: 65 ksi lxx: 2.06 in⁴ E: 29000 ksi
 fu: 80 ksi Sxx: 1.37 in³ Torsional pipe capacity
 Section: Pipe Zxx: 1.896 in³ Telastic: 14.84 k-ft
 Diameter: 3 in rx: 0.977 in Tplastic: 14.84 k-ft
 Thickness: 0.25 in J: 4.11720 in⁴ **Tensile shaft capacity**
 Area pipe A_{pipe}: 2.16 in² Sxy: 2.74 in³ Q_{yield}: 140.4 k
 Perimeter: 9.424777 in Q_{ultimate}: 140.4 k
 Define mechanical connection tension strength

3. Helix dimensions and properties

Use different size plates Available configurations: None Select
 End offset: 0.25 ft

	Diameter (in)	Spacing (ft)	Thick (in)	Effective Area (ft ²)	Ult. Capacity (k)
▶ 1	8	2	0.375	0.3	100
2	10	2	0.375	0.496	100
3	12	2.5	0.375	0.736	100

Buttons: Add a new plate, Delete selected plate, Save configuration, Delete config., Add configuration

- ✓ Create multiply soil types and define soil properties
- ✓ Soil properties estimation tools (NSPT values - test data)
- ✓ Create multiple borings and define the horizontal stratigraphy
- ✓ Add CPT logs and SPT Records - Estimate properties from records
- ✓ Custom Layer mode: Create inclined soil layers

Soil Types

Soil Types: F, O1, O2, S1, V, GT, R

1. Name and Basic Soil Type
 Soil Name: F
 Description: Miscellaneous fill

2. Soil Type - Behaviour
 Sand
 Silt
 Rock
 Clay
 IGM (intermediate geo mat.)
 Gravel

3. Default drained-undrained behavior for clays (See Theory Manual)
 Undrained
 Drained

A. General | B. Elasto-plastic | Lateral | E. Adv.

4. Unit Weights - Density
 γ_t 120 pcf
 γ_{dry} 120 pcf

5. Strength Parameters and Poisson Ratio
 Drained strength properties
 c' 0 psf
 ϕ' 30 degn
 ν 0.35

5. At-rest coefficients
 $KoNC$ 0.5
 $nOCR$ 0.5
 $Ko = KoNC * (OCR)^{nOCR}$

6. Ultimate bond (grouted piles when bond option is s)
 $q_{skin,u}$ 20 psf

Rock joints are open filled with gouge

Buttons: Add New Soil, Copy Soil, Delete Selected Soil, Delete all soils, Paste Soil, OK

Soil Layers

Available Borings: Boring 1

1. General Boring Information - Coordinates
 Name: Boring 1
 Coordinates X: 50 ft Y: 0 ft
 The x coordinate controls where the boring is shown in your design section view. Each design section uses one boring (soil strata). You can use a different boring on each design section.

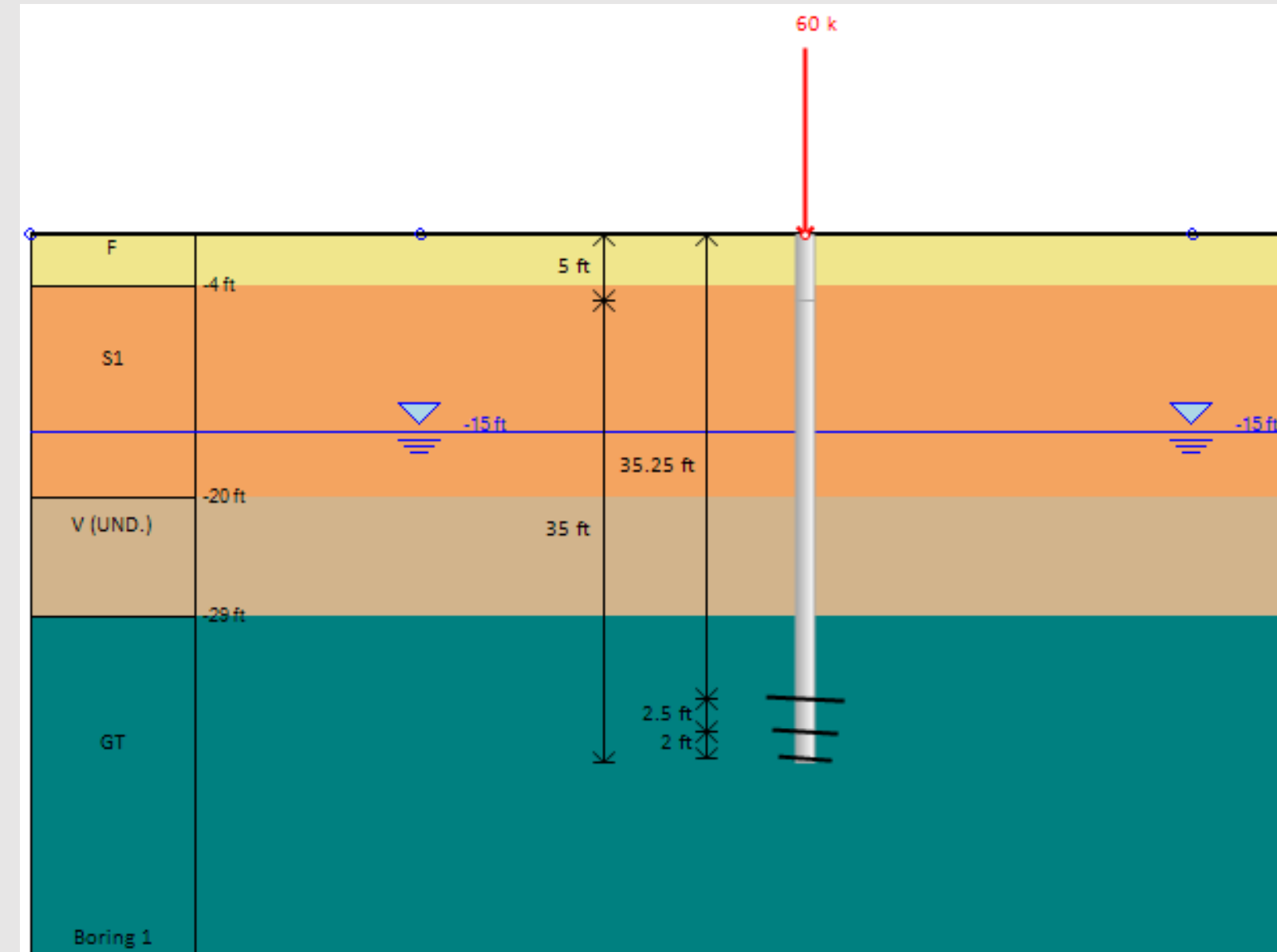
SPT Data Option (Applies to Design Section)
 SPT Record: Not assigned
 Add edit SPT records

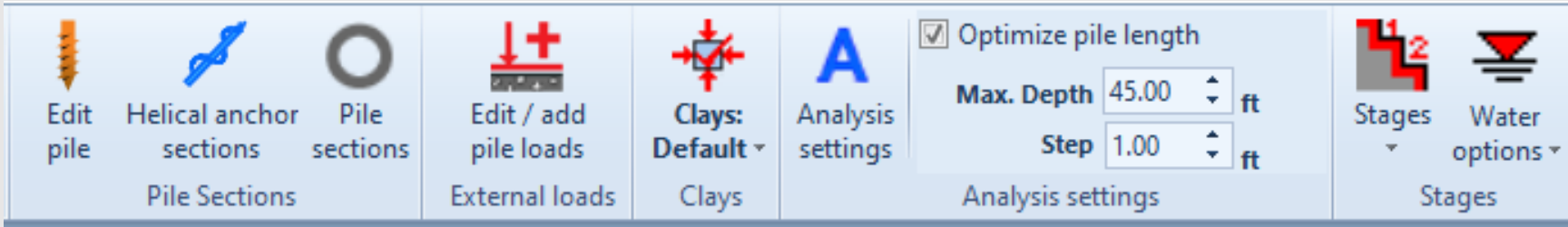
CPT Record Option (Applies to Design Section)
 CPT Record: Not assigned
 Add edit CPT records

2. Boring Layers - Layer Elevations

Top	Soil type	OCR	Ko	Edit
0	F	1	0.5	Edit
-4	S1	1	0.441	Edit
-20	V	1	0.531	Edit
-29	GT	1	0.412	Edit

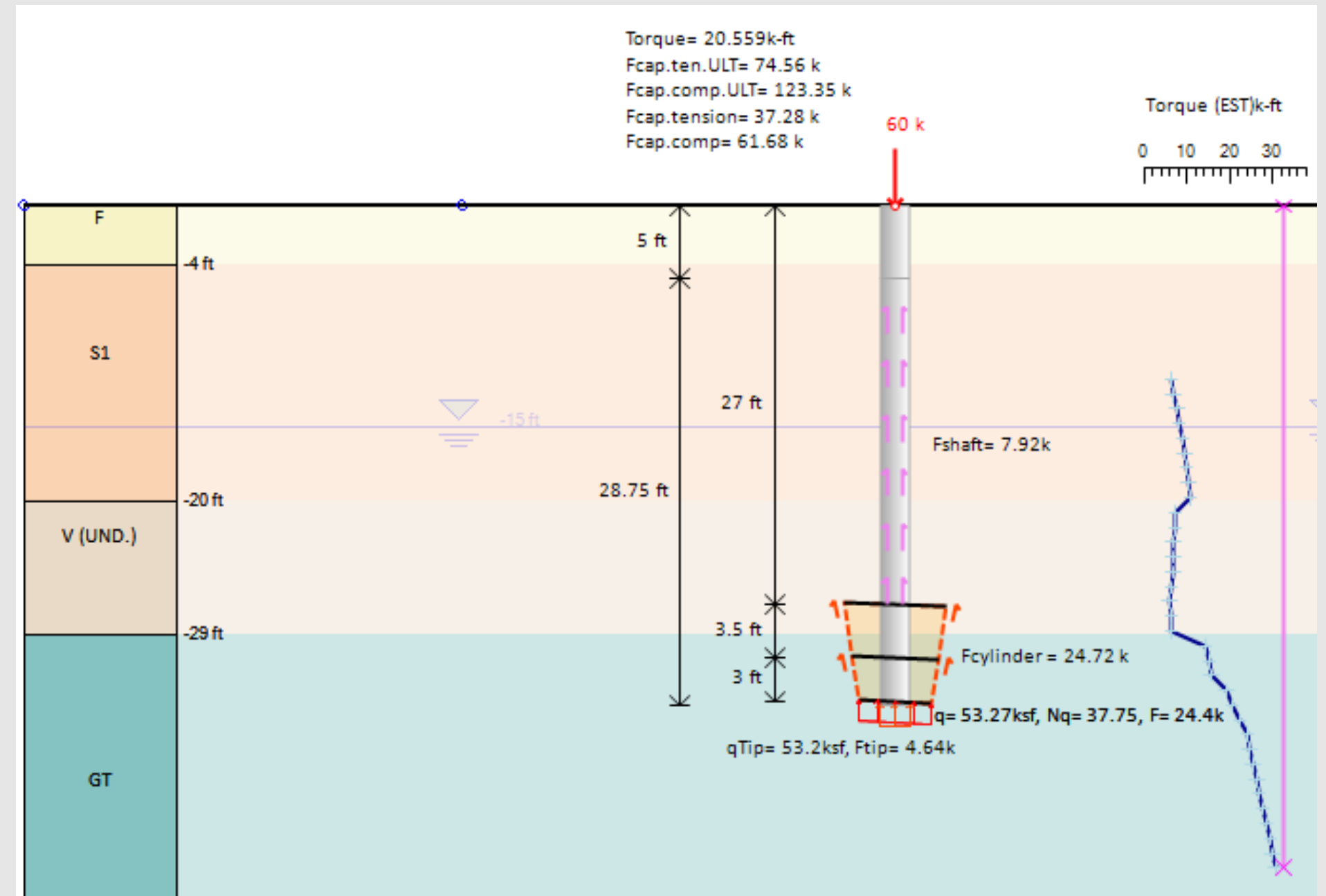
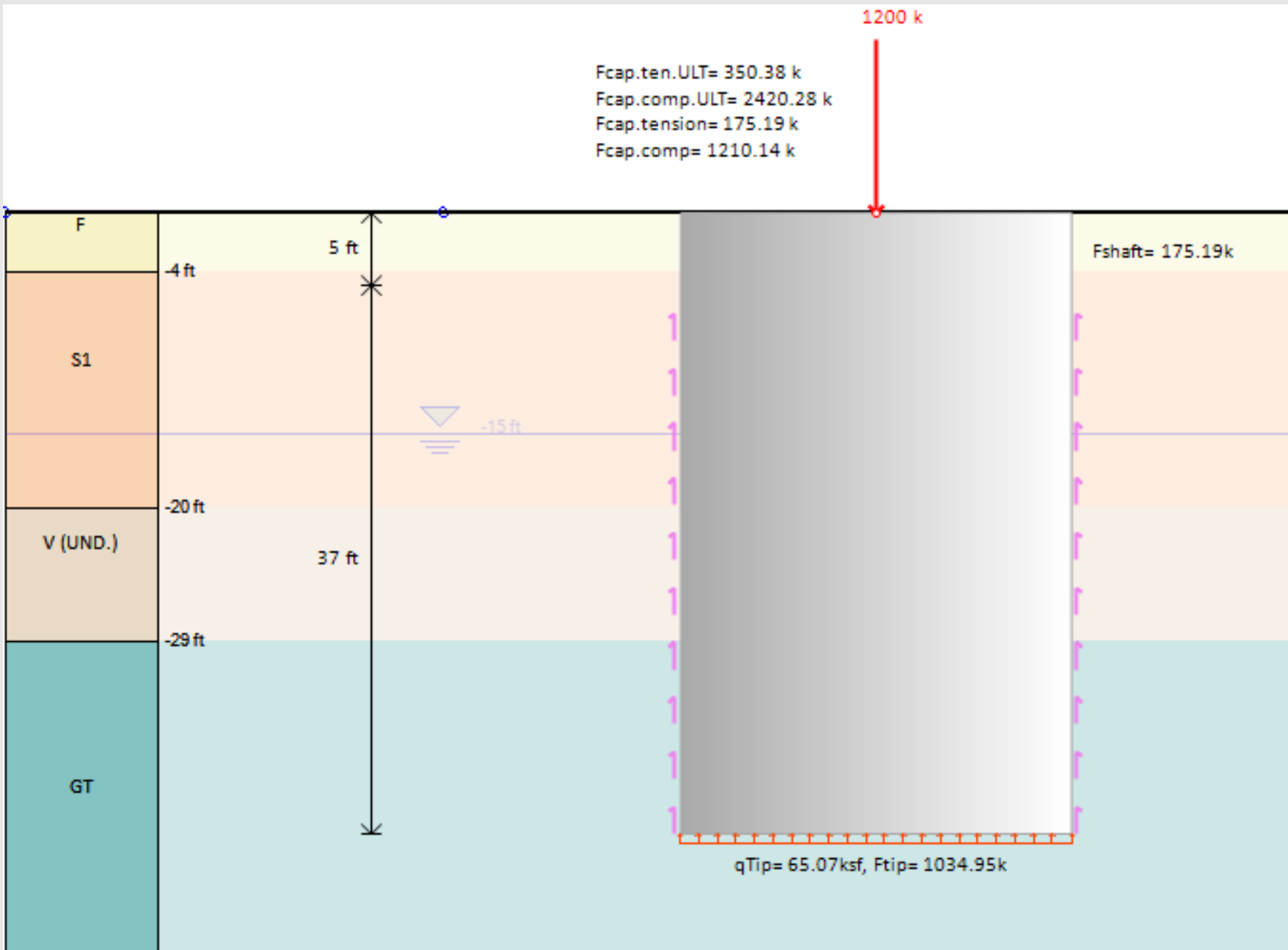
Buttons: Add New Boring, Delete Selected Boring (Stratigraphy), Clone Boring, Insert Layer, Delete Layer, OK, Cancel





Optimize pile length
 Max. Depth: 45.00 ft
 Step: 1.00 ft
 Analysis settings

- ✓ Add axial loads on the pile head (tension - compression)
- ✓ Calculate tension - compression bearing capacity
- ✓ Optimize pile length for the defined tension and compression loads



- ✓ Option to estimate pile settlements
- ✓ Pile acceptance criteria: Davisson, ICC 355, NYC 2011, Butler-Hoy and more
- ✓ Estimate pile structural capacity from pile criteria
- ✓ Add and review Axial Load Tests

Pile acceptance criteria

Available criteria

- Elastic
- ICC-AC358

Acceptance criteria

1. Name
Elastic Color

2. Set active/visible

Criterion is active (to be analyzed)

Criterion is visible (on graphs)

3. Equation

$$y = 0 + 0 D_{PL} + 0 D_S + 1 PL/AE$$

D_{PL} = Plate diameter D_S = Shaft diameter

Average plate size v

Define maximum net settlement

Ultimate load criterion (Criteria determines ultimate load)

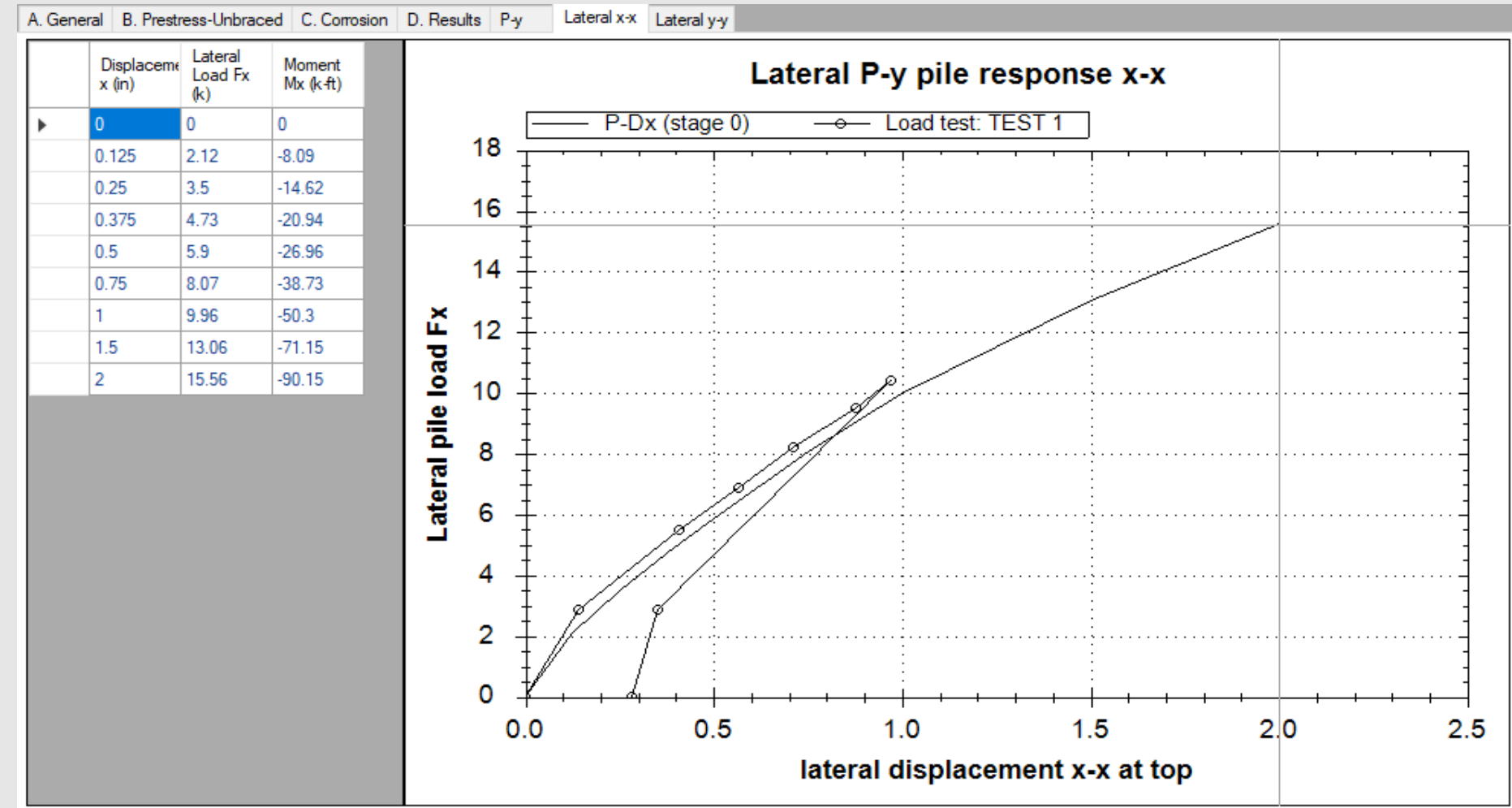
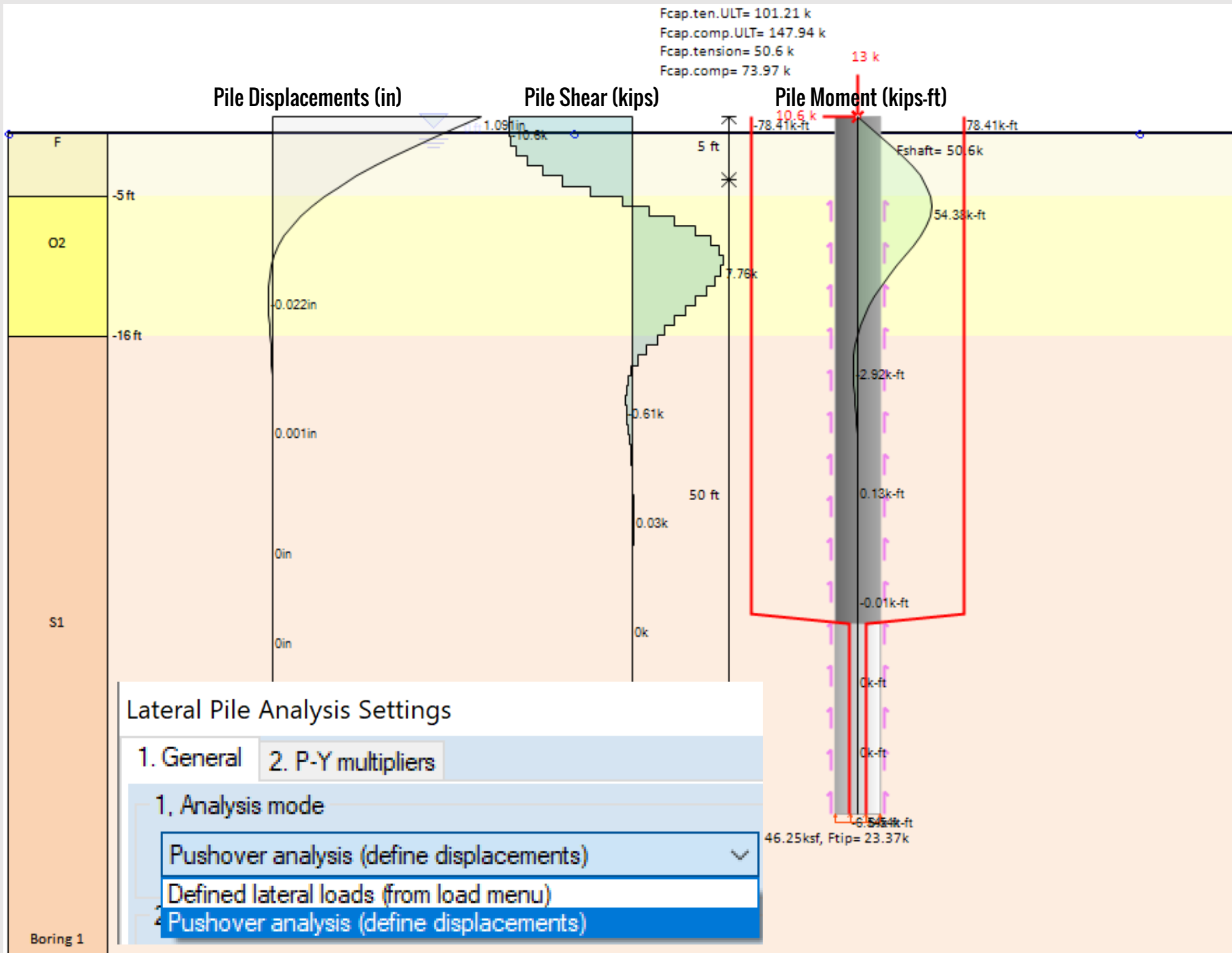
Determine load from criterion

Use deflection load slope

Buttons: Add new criteria, Delete criteria, Reset to Elastic, Reset to ICC355, Reset to Davisson, Butler-Hoy, NYC 2011-011, OK, Cancel



- ✓ Define lateral loads on the pile head (both local X and Y directions)
- ✓ Define lateral soil properties (implemented PY models for different soil types)
- ✓ Calculate lateral pile displacements for defined loads
- ✓ Perform pushover analysis
- ✓ Add and review lateral load tests
- ✓ Calculate pile moment and shear diagrams



- ✓ Structural Design Codes: ACI, AISC, LRFD, Eurocodes 2, 3 & 8, AS3600, AS 4100, CN + more
- ✓ Calculate moment capacity
- ✓ Perform all checks according to the selected design standard
- ✓ Export detailed report with all structural design calculations

Structural code options

Concrete Code Options

- 1:ACI 318-11
- 2:EC2-2004
- 3:EC2-German Annex
- 4:EC2-Cyprus Annex
- 5:EC2-French Annex
- 6:EC2-Austrian Annex
- 7:EC2-Italian Annex
- 8:EC2-Netherlands Annex
- 9:EC2-Czech Annex
- 10:EC2-Belgium Annex
- 11:EC2-Slovakian Annex
- 12:EC2-Danish Annex
- 13:EC2-Finish Annex
- 14:EC2-Swedish Annex
- 15:EC8-Greek Annex
- 16:EC8-Italian Annex
- 17:EC8-Austrian Annex
- 18:EC8-Bulgarian Annex
- 19:EC8-Cyprus Annex
- 20:EC8-Slovenian Annex
- 21:EC8-French Annex
- 22:EC2-Greek Annex
- 23:EC2-2004
- 24:AS 3600-2009
- 25:CN (China)

Steel Code Options

- 17:AISC 360-10 ALL.
- 1:ASD 1989
- 2:EC3 2005-CEN
- 3:LRFD 13th Edition 2005
- 4:NTC 2008
- 5:EC3 2005-Bulgaria
- 6:EC3 2005-Slovenia
- 7:EC3 2005-UK
- 8:EC3 2005-Norway
- 9:EC3 2005-Sweden
- 10:EC3 2005-Finland
- 11:EC3 2005-Denmark
- 12:EC3 2005-Portugal
- 13:EC3 2005-Germany DIN
- 14:EC3 2005-Singapore
- 15:EC3 2005-Greece
- 16:ANSI/AISC 360-10
- 17:AISC 360-10 ALL.
- 18:BS 5950-1:2000
- 19:AS/NZS 4100
- 20:CN (China)
- 21:ANSI/AISC 360-16
- 22:AISC 360-16 ALL.

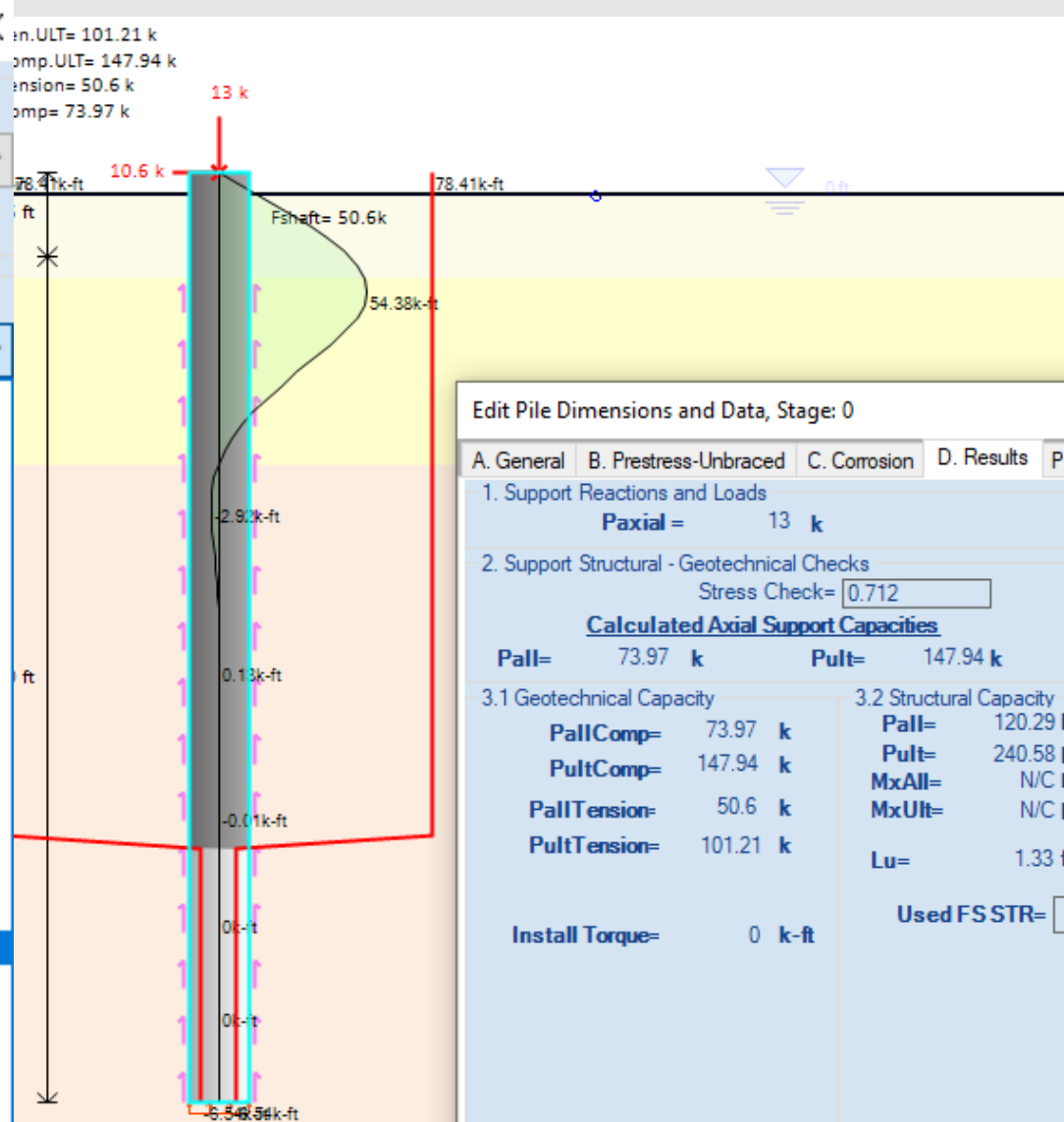
Structural code options

Concrete Code Options

- 1:ACI 318-11

Steel Code Options

- 17:AISC 360-10 ALL.



Edit Pile Dimensions and Data, Stage: 0

A. General B. Prestress-Unbraced C. Corrosion D. Results P-y

1. Support Reactions and Loads

Paxial = 13 k

2. Support Structural - Geotechnical Checks

Stress Check= 0.712

Calculated Axial Support Capacities

Pall=	73.97 k	Pult=	147.94 k
-------	---------	-------	----------

3.1 Geotechnical Capacity

PallComp=	73.97 k
PultComp=	147.94 k
PallTension=	50.6 k
PultTension=	101.21 k

3.2 Structural Capacity

Pall=	120.29 k
Pult=	240.58 k
MxAll=	N/C k
MxUlt=	N/C k
Lu=	1.33 ft

Install Torque= 0 k-ft

Used FSSTR=

calculations

Calculate pile capacities for stage : Stage 0

FS SHAFT.RESISTANCE = 2 (preliminary geotechnical)

FS BEARING.RESISTANCE = 2 (geotechnical)

Basic description of shaft strength calculations, stage: 0

Lateral earth stresses determined with Mitch-Clemence approach:

$k_h = 0.09 (e)^{0.08 \Phi} = \text{normal stress}$

Adhesion values determine from cohesion or undrained shear strength with the following method:

By using a tri-linear approach similar to API, where:

$\alpha \text{ c.factor.1} = 0.8$ when c is smaller than $c = 1\text{ksf}$

$\alpha \text{ c.factor.2} = 0.5$ when c is greater than $c = 2\text{ksf}$

A linear interpolation is assumed for intermediate values

$\beta = 90$ degrees. pile angle

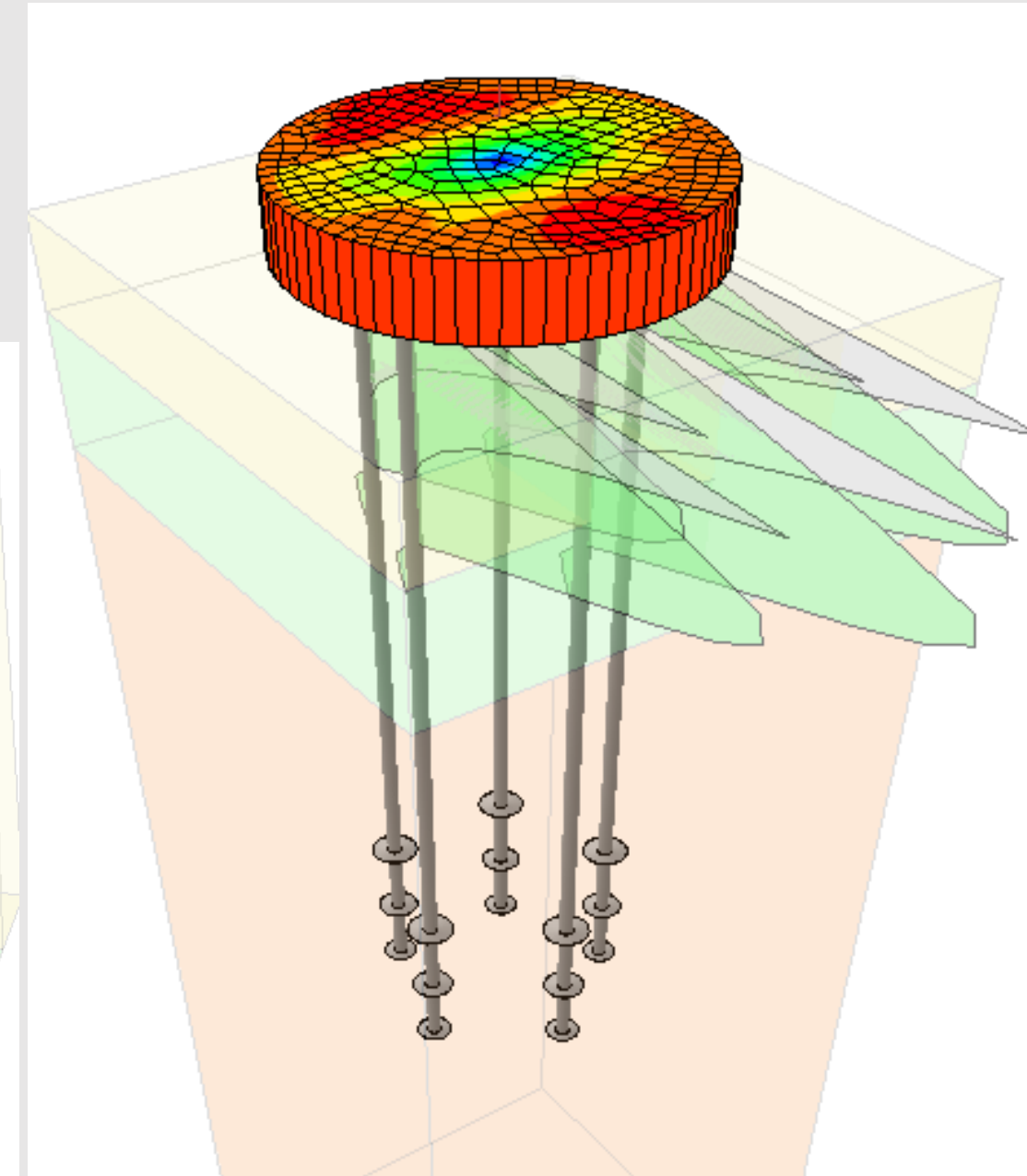
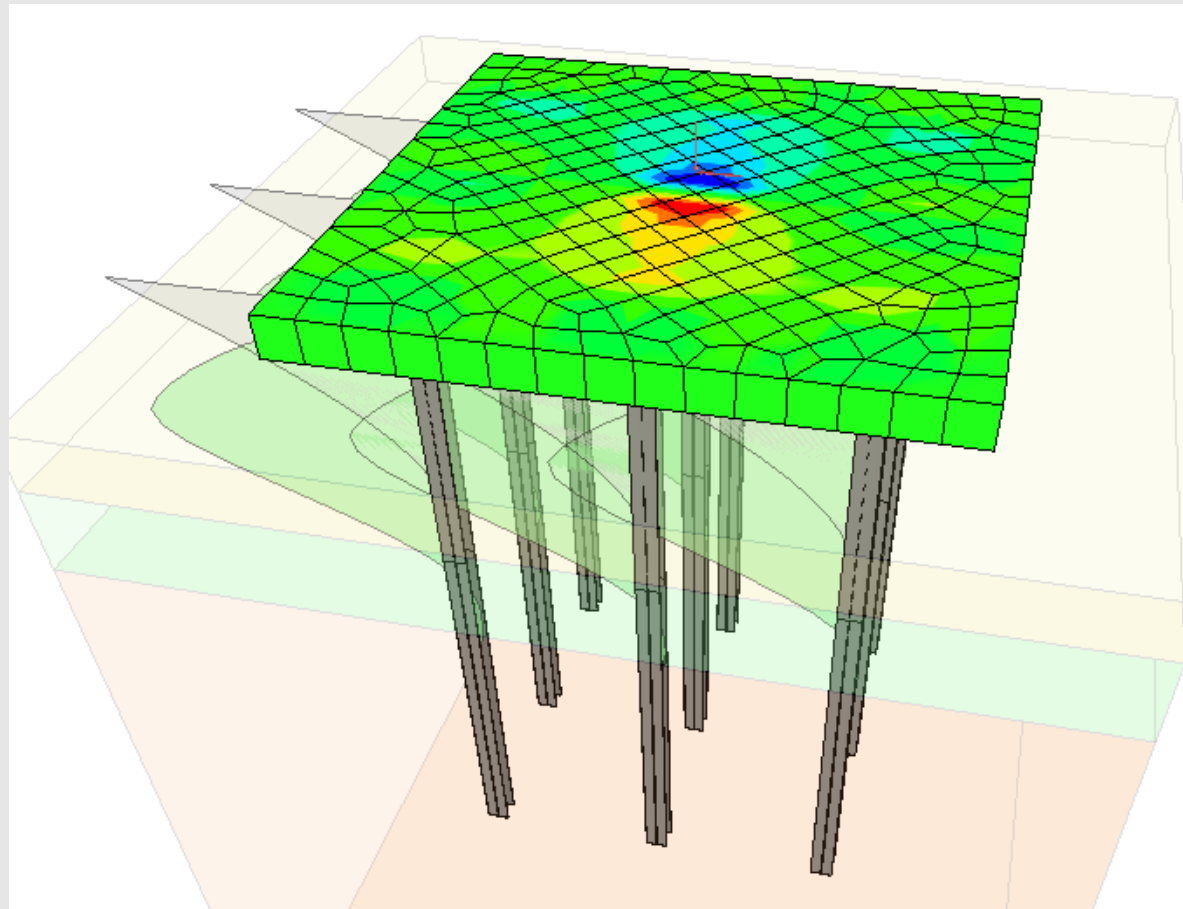
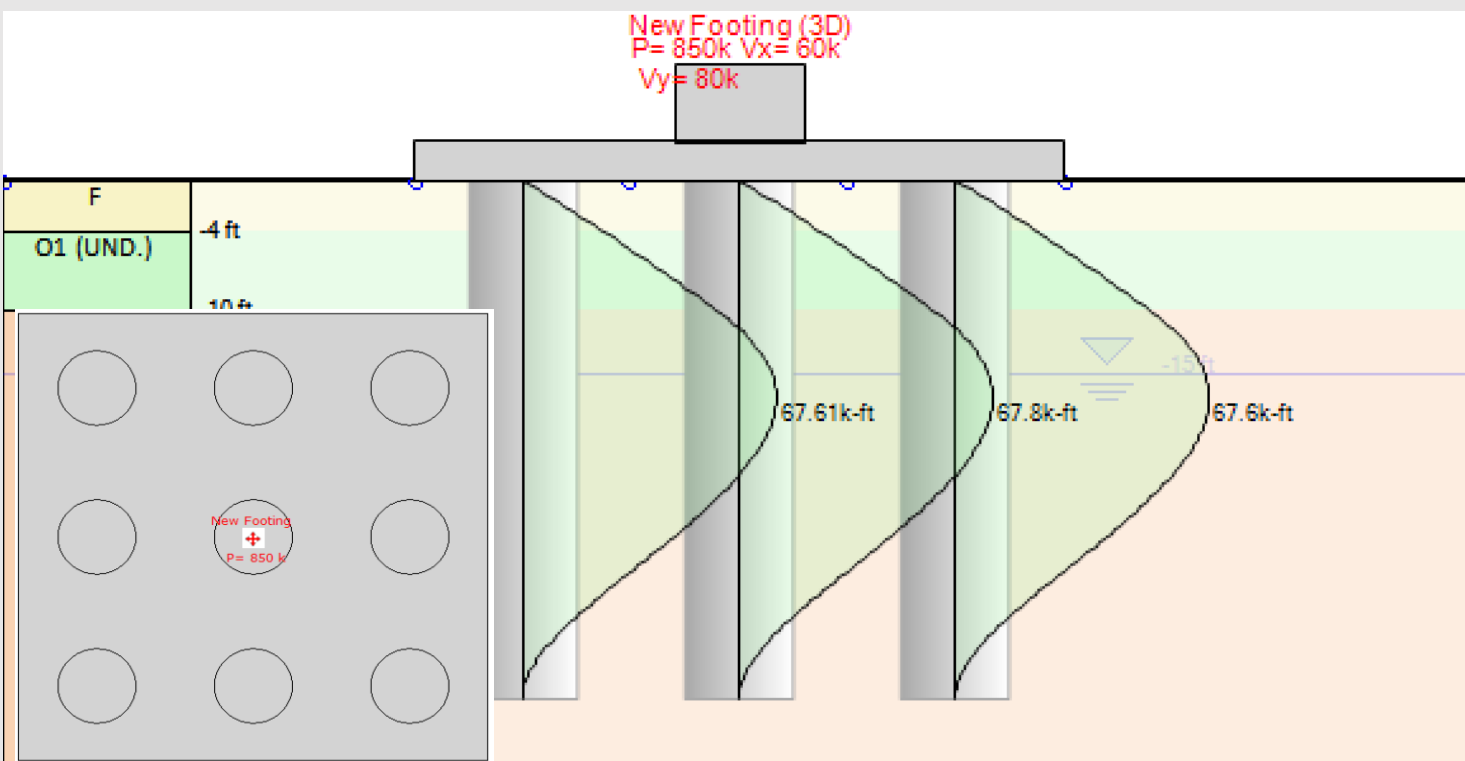
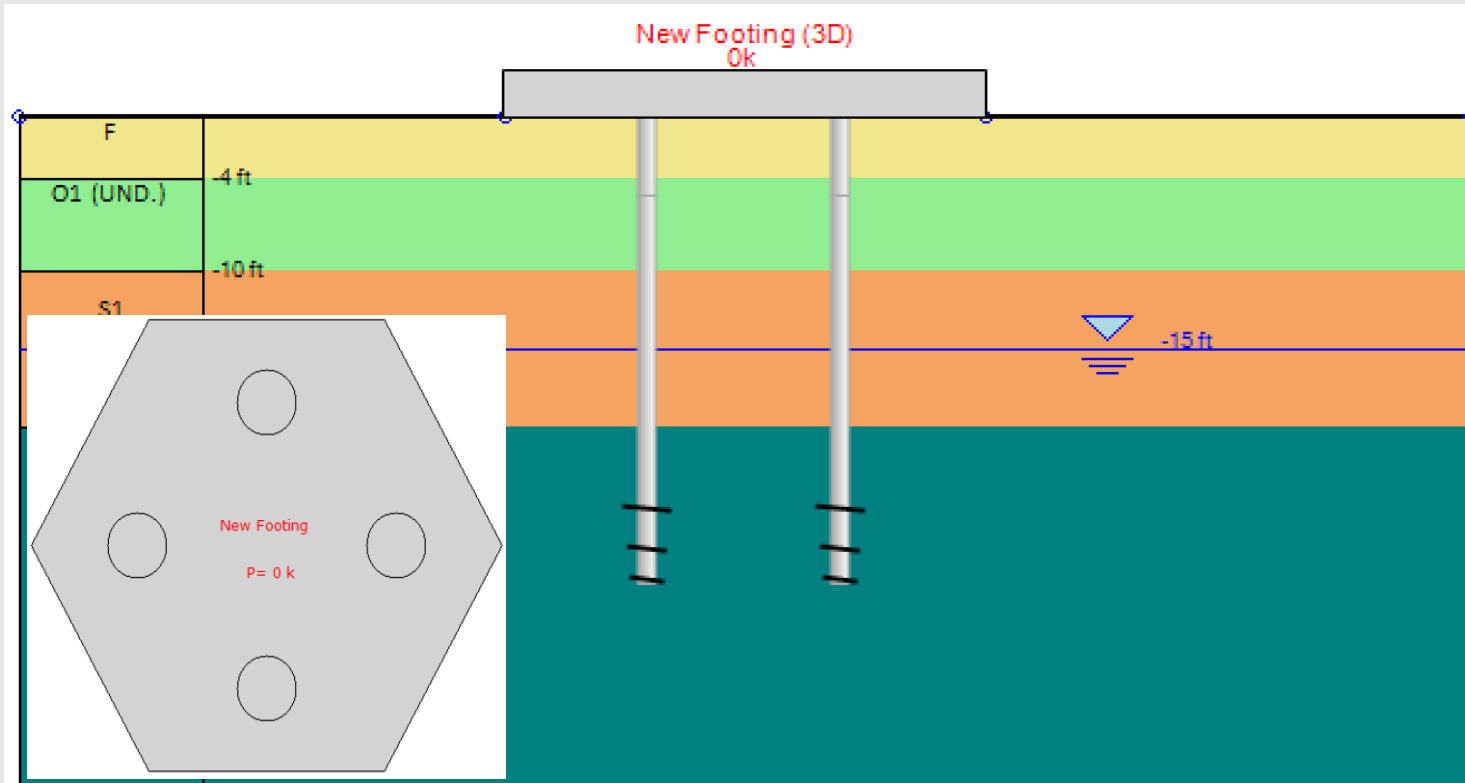
PART 2: DeepFND/HelixPile Additional Modules and Standard Packages

More information:

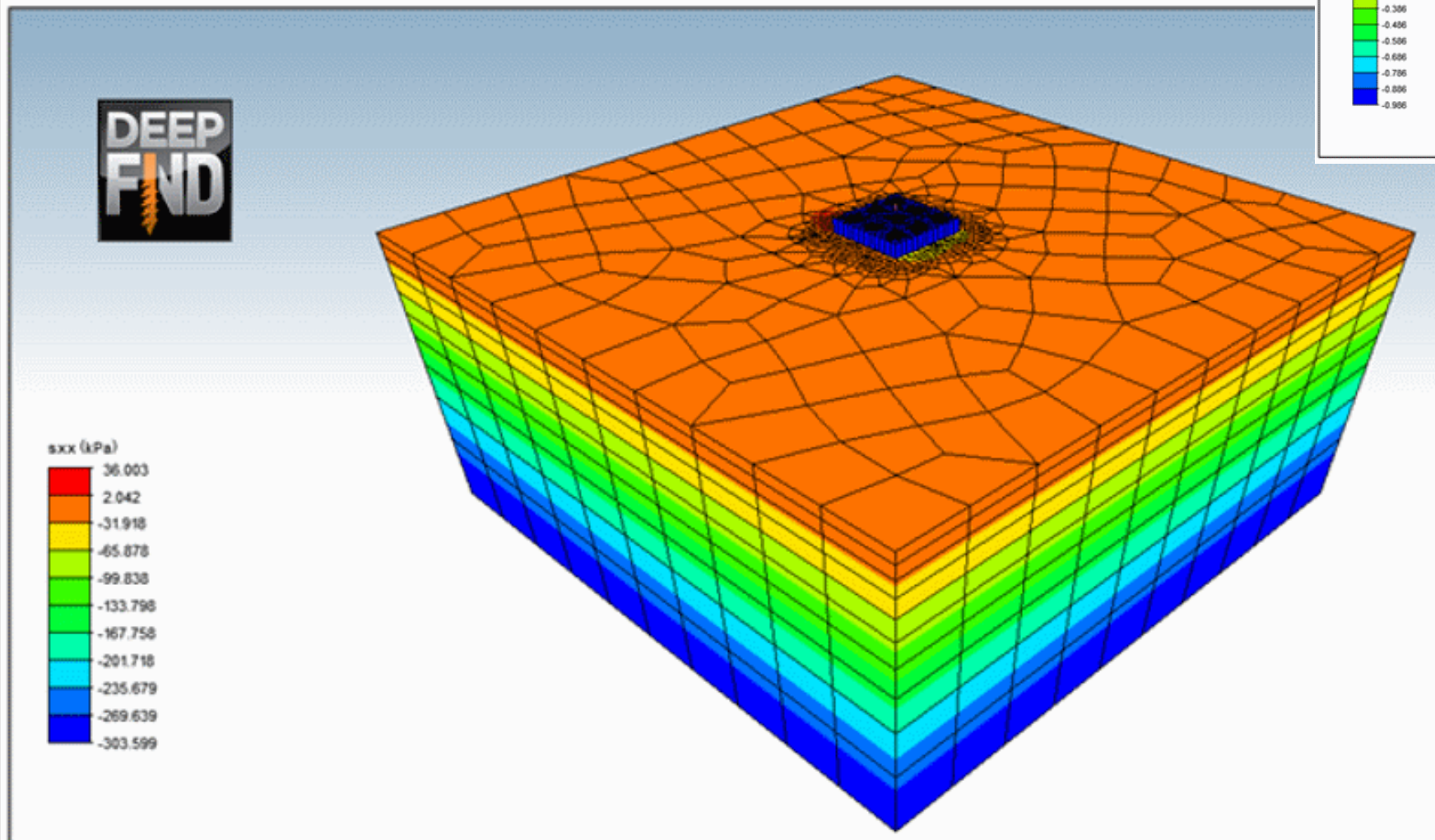
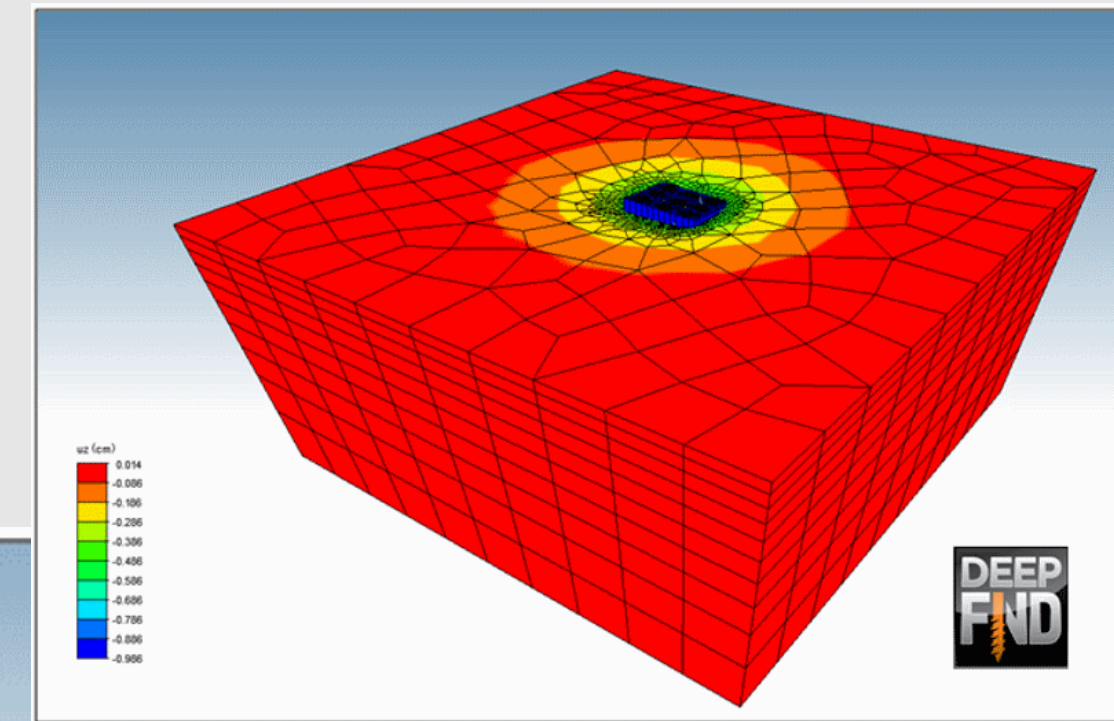
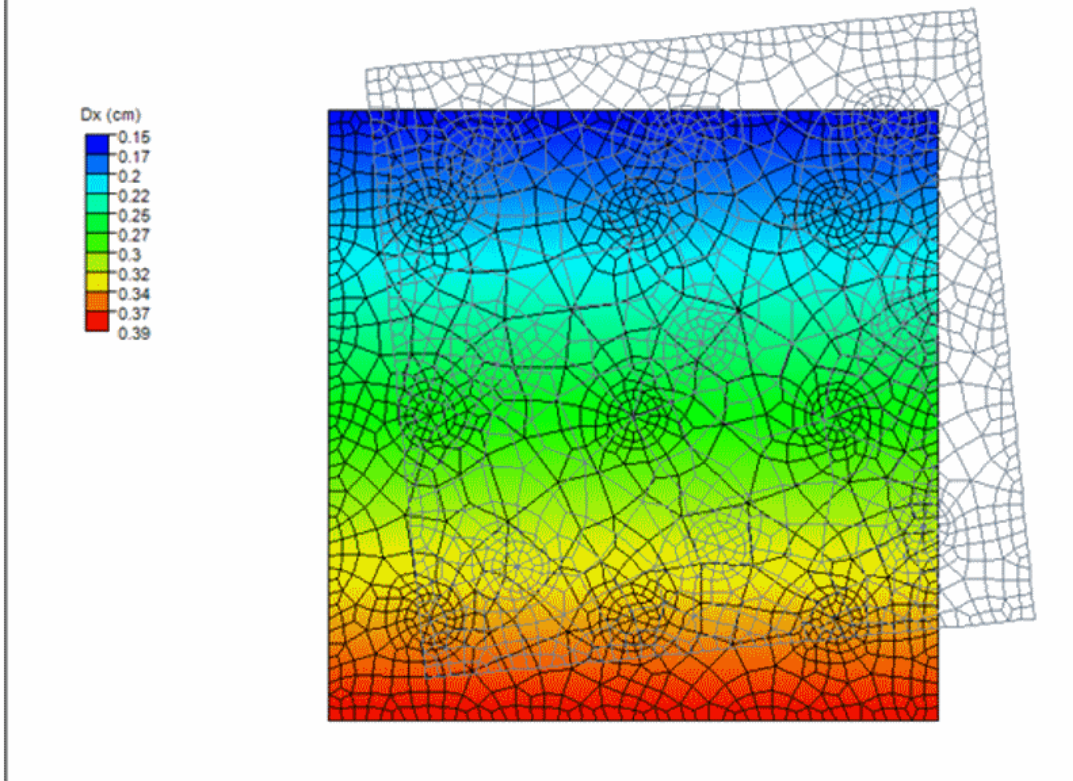
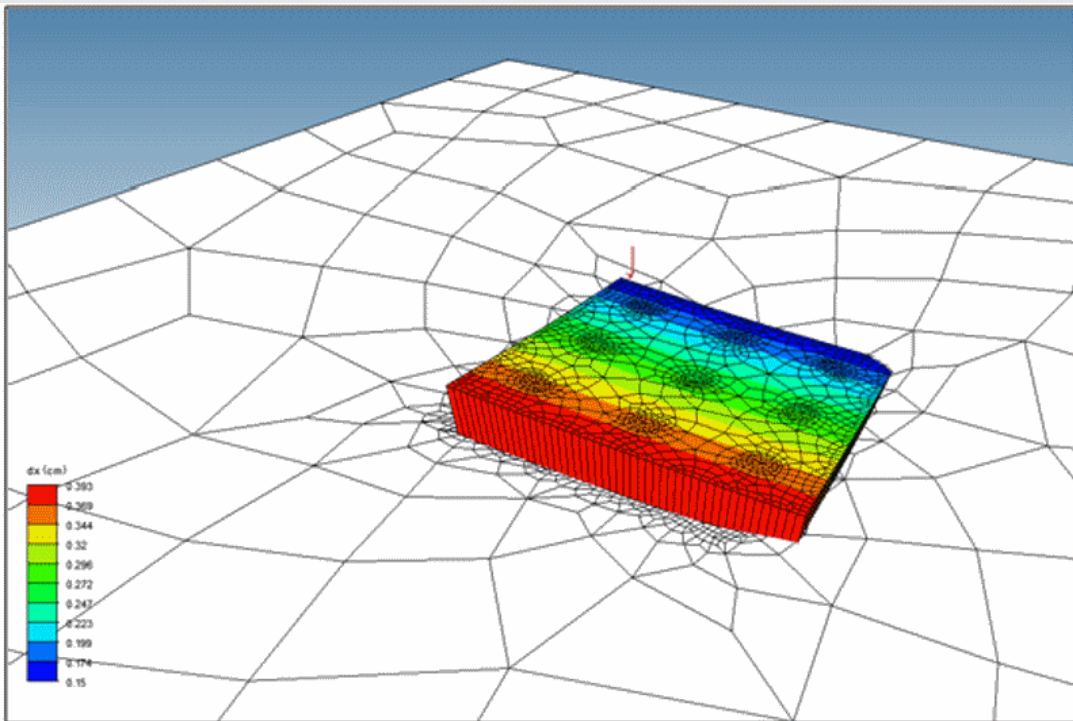
**Click here to learn more:
DeepFND - Features and Capabilities**

**Click here to learn more:
HelixPile - Features and Capabilities**

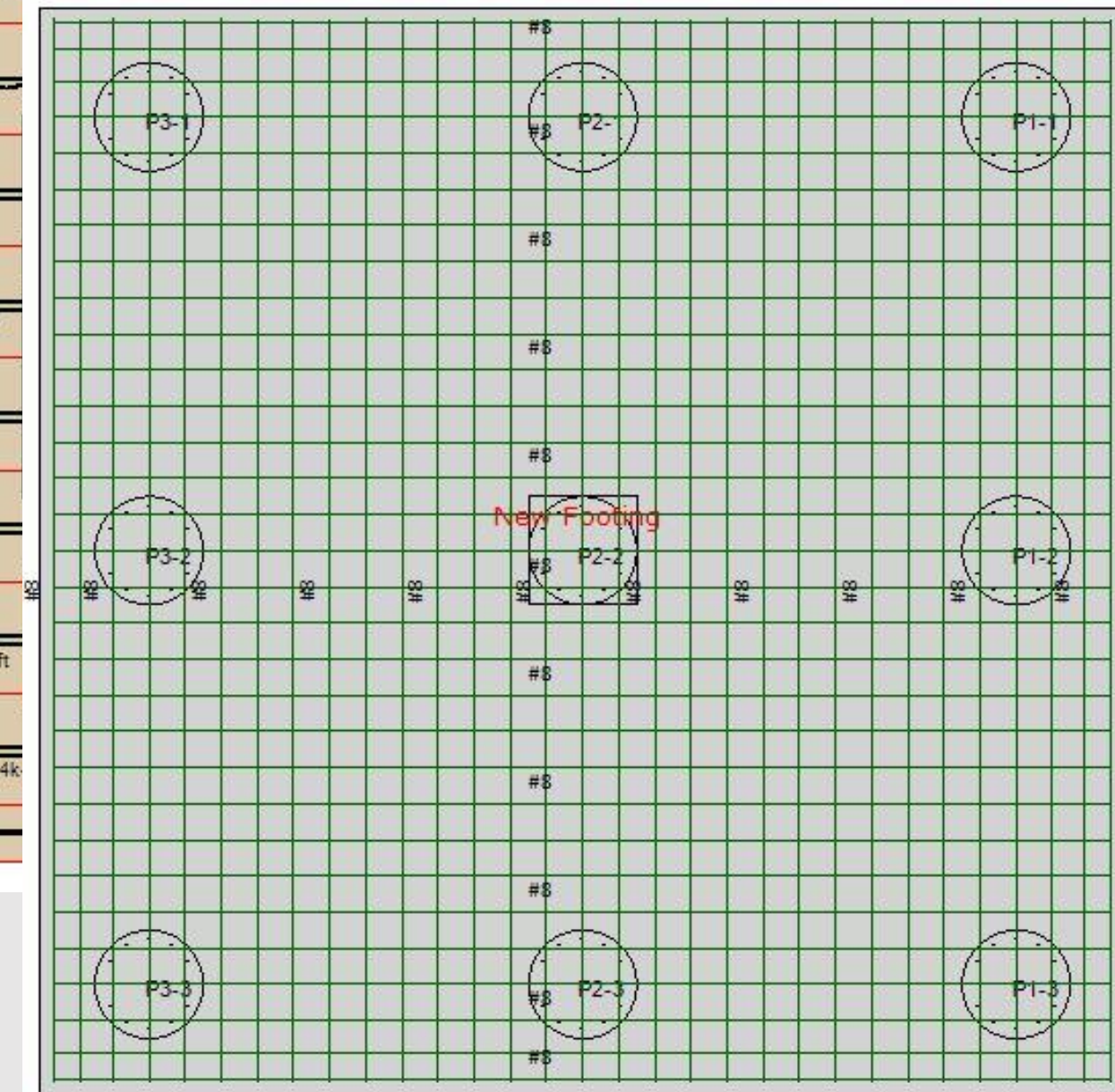
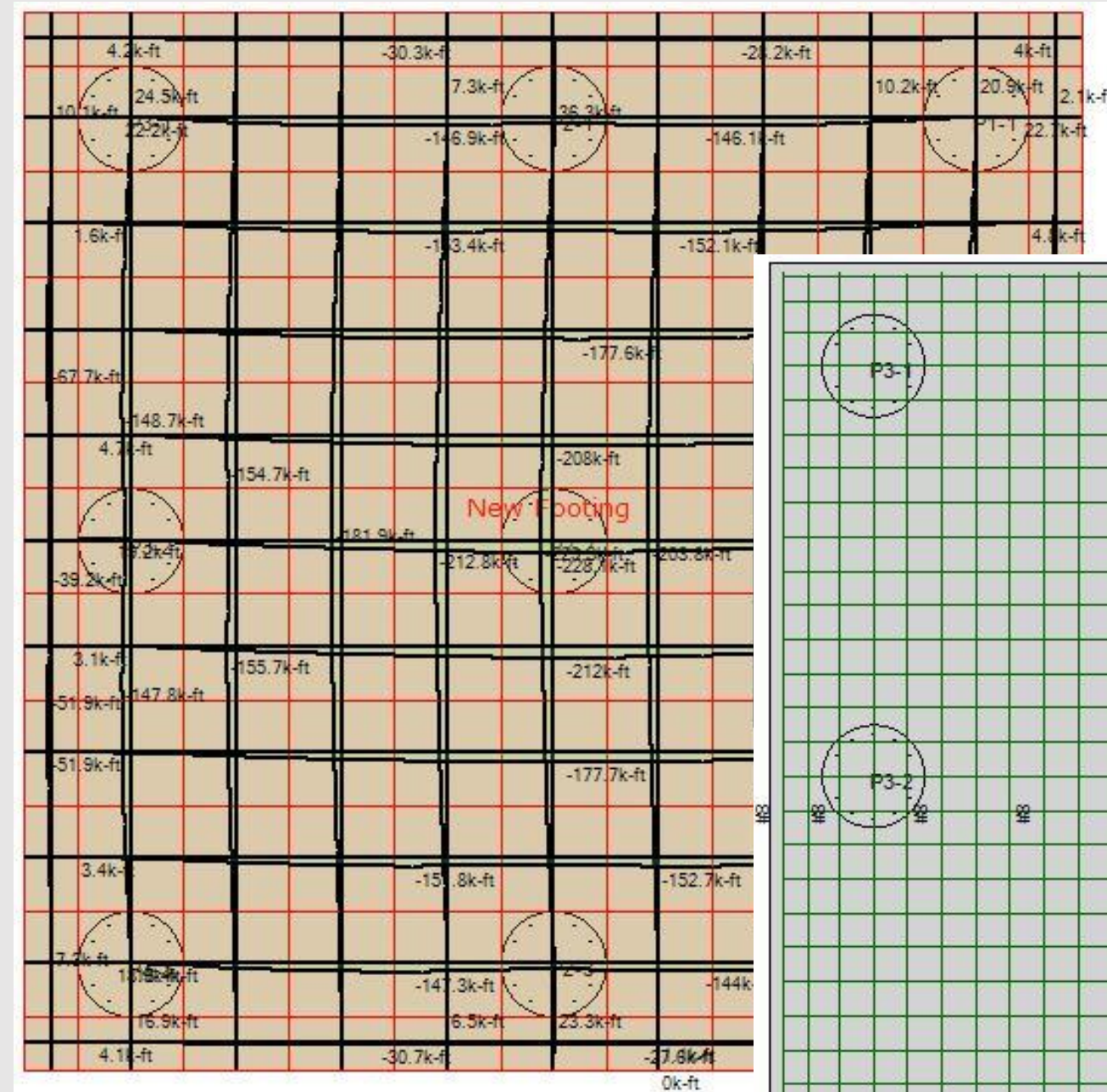
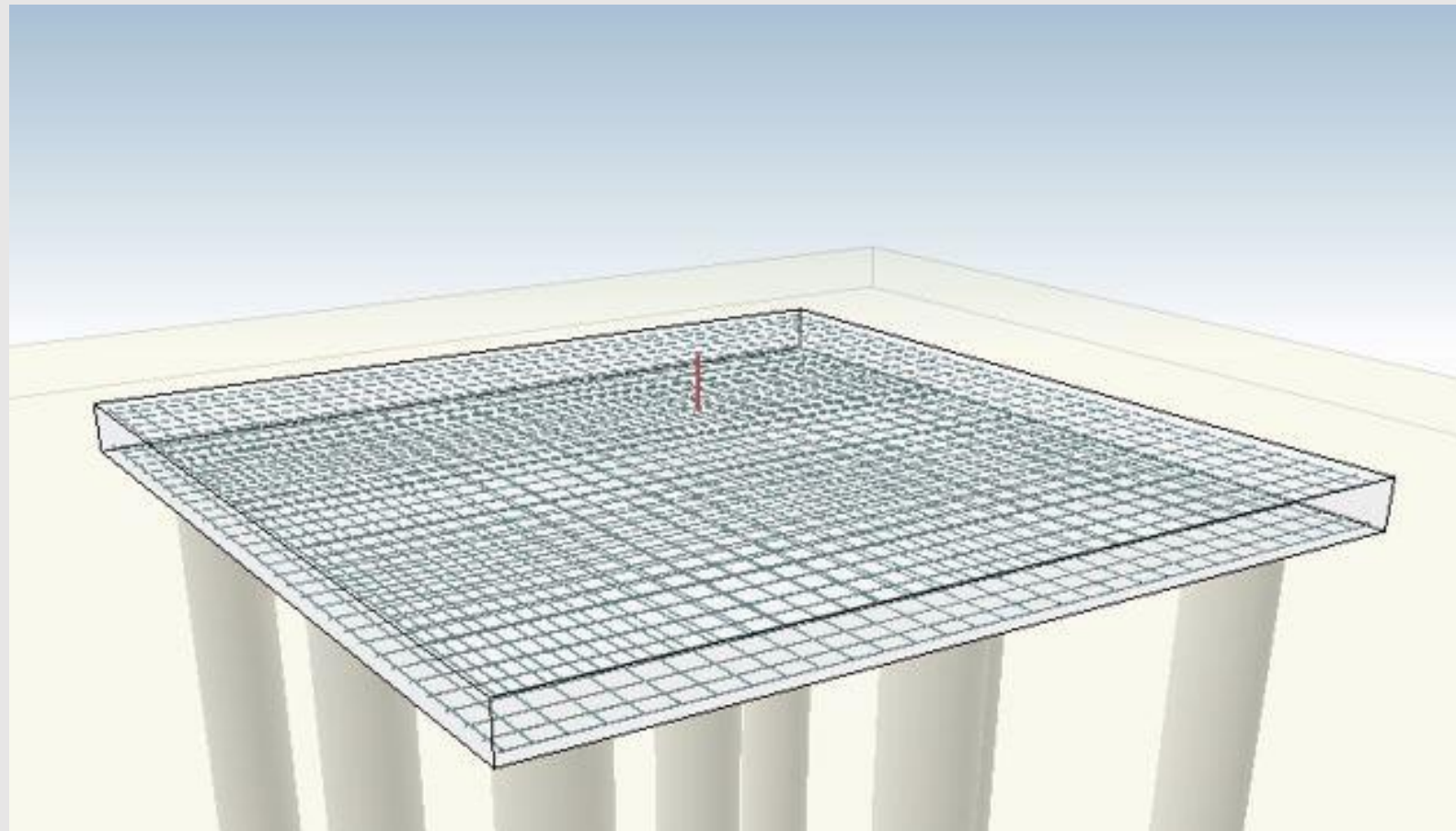
- ✓ Create pile caps of any shape
- ✓ Define pile configurations (positions, structural sections)
- ✓ Distribute the loads applied on the cap to each pile, according to the pile position
- ✓ Design all piles and the pile cap
- ✓ Top view/side section view/3D model
- ✓ Option that the pile cap behaves as pile raft



- ✓ Model the interaction effects of pile rafts and pile groups in a detailed manner
- ✓ Monitor stress and displacement/settlement at any location at the surface and within the soil medium
- ✓ Use sophisticated constitutive laws to simulate soil behavior
- ✓ Calculate the response of your foundation system under dynamic excitation



- ✓ Generate pile cap reinforcement strips
- ✓ Optimize cap reinforcement with a click of a button
- ✓ Calculate punching strength for concrete caps for each pile



Standard DeepFND Software Packages

DeepFND Basic

Vertical and Lateral Analysis of Single Helical & Non-Helical Piles

DeepFND Pro

Vertical and Lateral Analysis of Single Helical & Non-Helical Piles
Analysis or Pile Caps and Rafts
(PY Spring Method)

DeepFND Pro+

Vertical and Lateral Analysis of Single Helical & Non-Helical Piles
Analysis or Pile Caps and Rafts
(PY Spring Method)
Pile Cap Design

DeepFND Expert

Vertical and Lateral Analysis of Single Helical & Non-Helical Piles
Analysis or Pile Caps and Rafts
(PY Spring & 3D FEM)

DeepFND Expert+

Vertical and Lateral Analysis of Single Helical & Non-Helical Piles
Analysis or Pile Caps and Rafts
(PY Spring & 3D FEM)
Pile Cap Design

Standard HelixPile Software Packages

HelixPile - Single Piles

Vertical and Lateral Analysis of Single Helical Piles

HelixPile Full

Vertical and Lateral Analysis of Single Helical Piles
+ Pile Caps with Pile Groups
+ Pile Rafts

- 1 Year of full Technical Support (training, questions, file reviews) is included in any software purchase
- Optional Annual Maintenance options (after the first year)
- Discounts for Additional Licenses
- Additional Modules can be purchased and activated at any point in any software version

THANK YOU!

DESIGN AND OPTIMIZE ANY PILE FOUNDATION SYSTEM IN MINUTES AND GAIN A COMPETITIVE EDGE!

Learn tips and tricks of deep excavation design

BOOK HERE A FREE ONLINE PRESENTATION
E: training@deepexcavation.com

or Call Us at: +1 - 206-279-3300

Learn from examples, videos and case studies

**CLICK HERE FOR EXAMPLES,
VIDEOS AND ARTICLES**

Prices and Licensing Questions: sales@deepexcavation.com
Technical Support: support@deepexcavation.com

TRUSTED BY

